

Herd Testing System Terminal Configuration

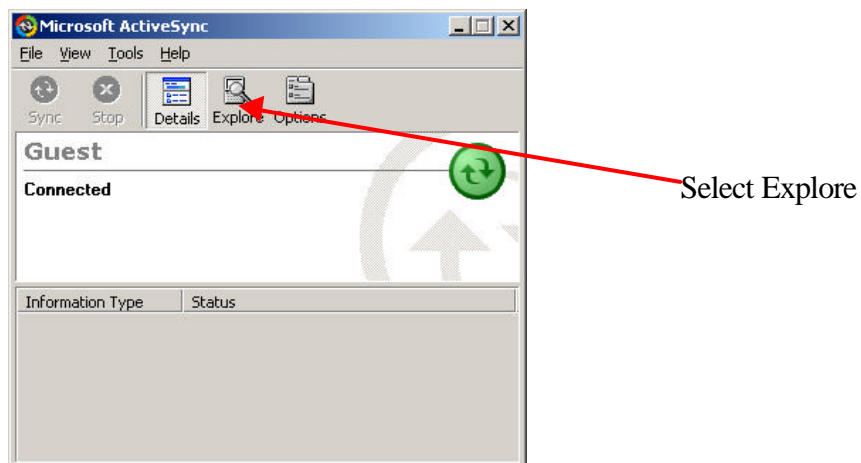
The purpose of this document is to describe to users of the Intermec 7XX (710, 720, 750, and 760) terminal a method used to save the terminal configuration to the terminal compact flash card, such that on a cold boot (manual or after a flat battery) the unit may be configured automatically to the settings prior to the cold boot.

The Intermec 7XX terminal utilises the Microsoft PocketPC operating system, when in use the terminal settings are saved to RAM. During the cold boot process the contents of RAM are destroyed. To overcome the issues of reconfiguring the terminal following a cold boot (System settings such as IP address, device preferences, screen calibration), Intermec have released the software tool RegFlush.

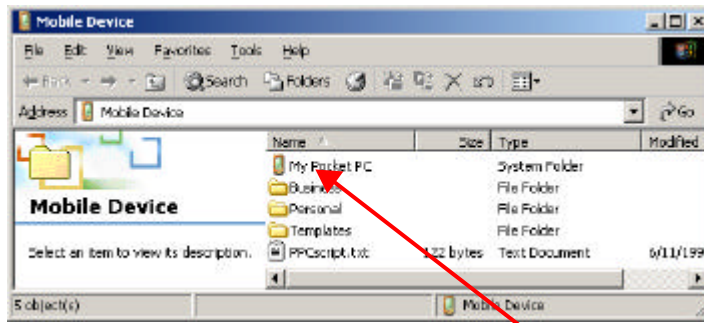
The function of RegFlush is to capture a snap shot of the registry settings of the terminal and store the file to the compact flash card. Following a cold boot the system will reload the terminal settings using the RegFlush file. This will now provide time savings in having to configure the terminal to the settings prior to the cold boot.

To activate the RegFlush utility, please use the following steps;

1. Load the RegFlush utility to the terminal CABFILES directory using ActiveSync
 - i. Make sure you have an ActiveSync session between the host computer and the terminal.
 - ii. Browser to the terminal from the ActiveSync application using Explore



- iii. The host computer will now communicate with the terminal and the following screen will appear on the computer display

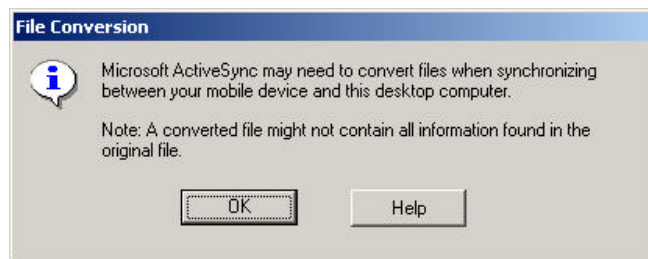


Select My Pocket PC

The host computer will now browse into the terminal.

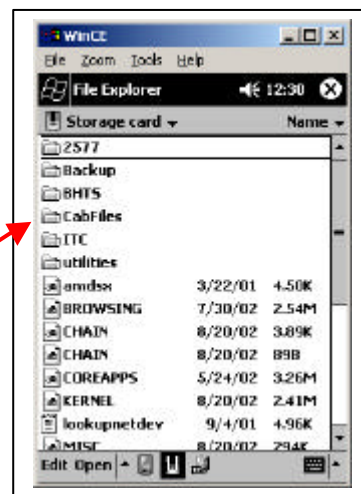
Go to the folder My Pocket PC -> Storage Card -> CabFiles

- iv. Using Windows Explorer on the host computer copy the file regflush.CAB to the terminal CabFiles folder. When this is done the following will be display;



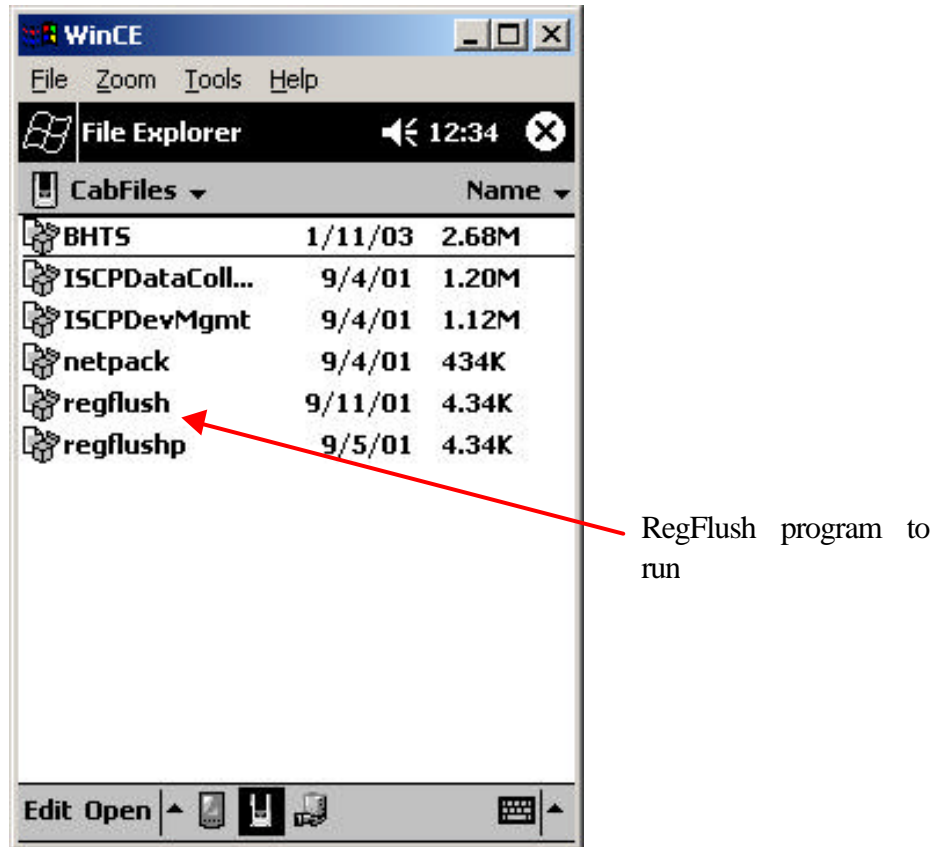
Select OK to continue. The RegFlush program will now be copied to the terminal.

- 2. The next step will be to install the RegFlush program.
 - i. The first step is to select Start -> Programs -> File Explorer
 - ii. Browser to the CabFiles folder



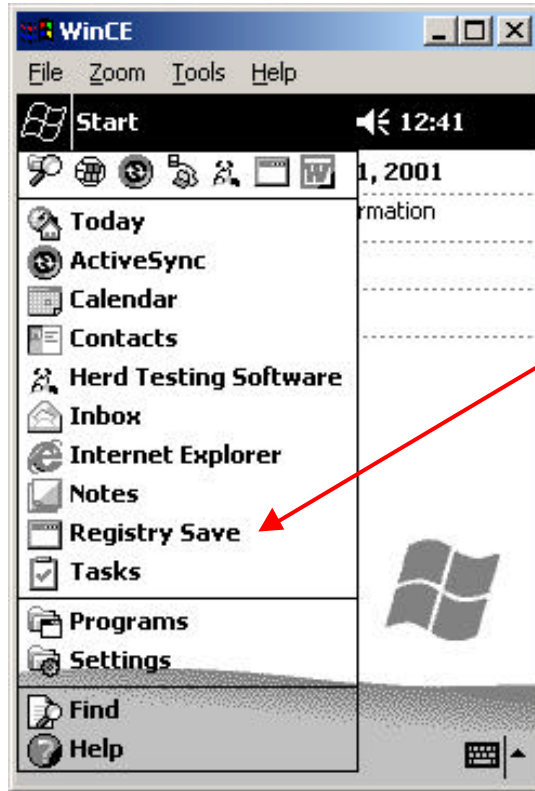
CabFiles folder

- iii. Select the program RegFlush by tapping it once.



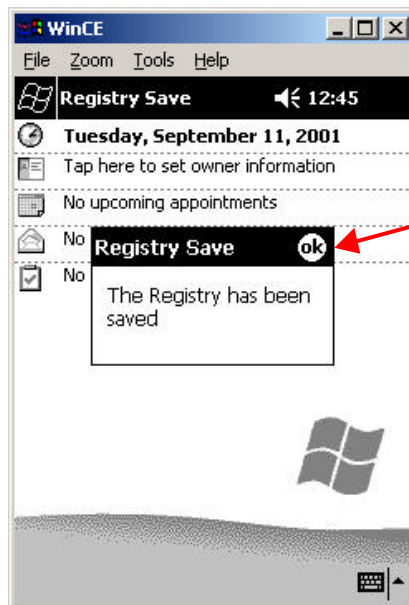
- 3. Once the installation is completed the operator must setup the unit to their requirements.

- Once the unit is setup to the operator's requirements the next step is to execute the RegFlush utility, such that the configuration may be saved to the compact flash card. Please follow the steps outlined below to execute the RegFlush utility.



Program to execute to save settings

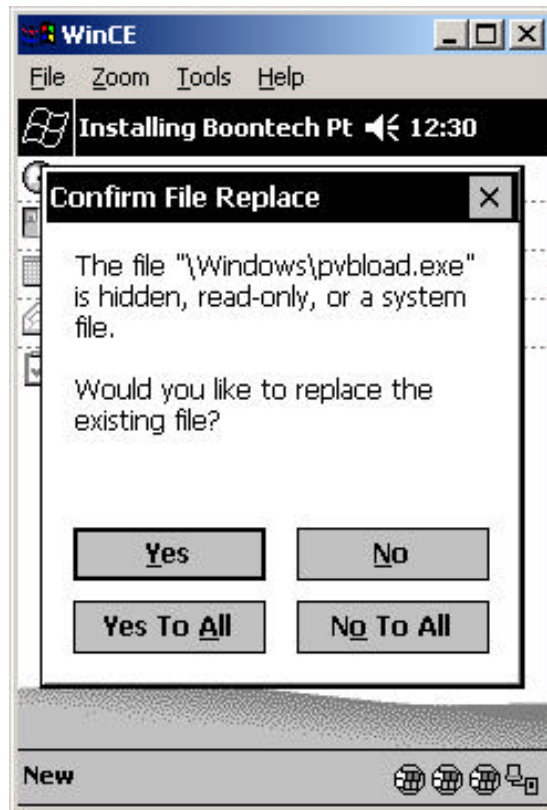
Once the program is executed (simply tap the Registry Save), the following screen will appear.



Select OK to continue

Following a cold boot the terminal will commence loading the Herd Testing System software. The following screens may appear;

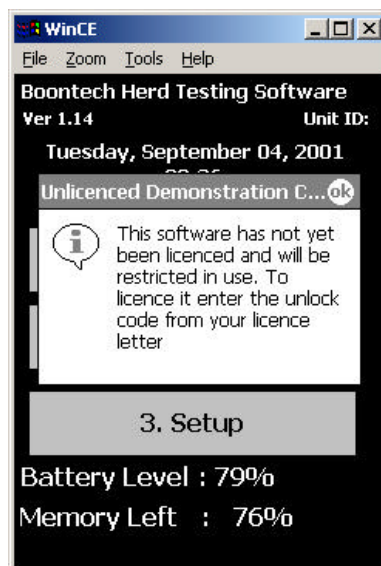
1. The following prompt may appear;



Simply select Yes To All

If additional screens are displayed simply select Yes To All.

2. The unit will then continue loading the software. If the terminal does not have a valid license the following will be displayed;



Select OK and proceed to enter the license information from the Setup option.

Under normal operating conditions the license will have already been entered, and it is not required to enter the license number.

The terminal may now be used as required.

Important notes

1. When updating the Operating System it will be necessary to delete Registry.sys from the Storage card folder on the terminal. After deleting Registry.sys you can proceed to update the operating system, configure the terminal, and then run the Registry Save program. Deleting Registry.sys will delete the system settings, and this is necessary because of changes that can occur between the old operating system and the new operating system.
2. The Registry Save program will not save files extracted to the Pocket PC device, it only saves the registry. Any files that are needed to be reinstalled after a cold boot should be put into a CAB file so they will be automatically extracted on every cold boot.
3. The Registry Save program will not restore the system password.
4. The Registry Save program only takes a snapshot of the registry, it does not automatically save any future changes to the registry. You must remember to run the Registry Save program after making any system changes that need to be saved.
5. The registry is loaded from the Storage card before any CAB files are extracted. A CAB file can overwrite registry entries.
6. The RegFlushKey() API and the Registry Save program will only work with Pocket PC 2000 version 2.07 or greater any Pocket PC 2002 version.