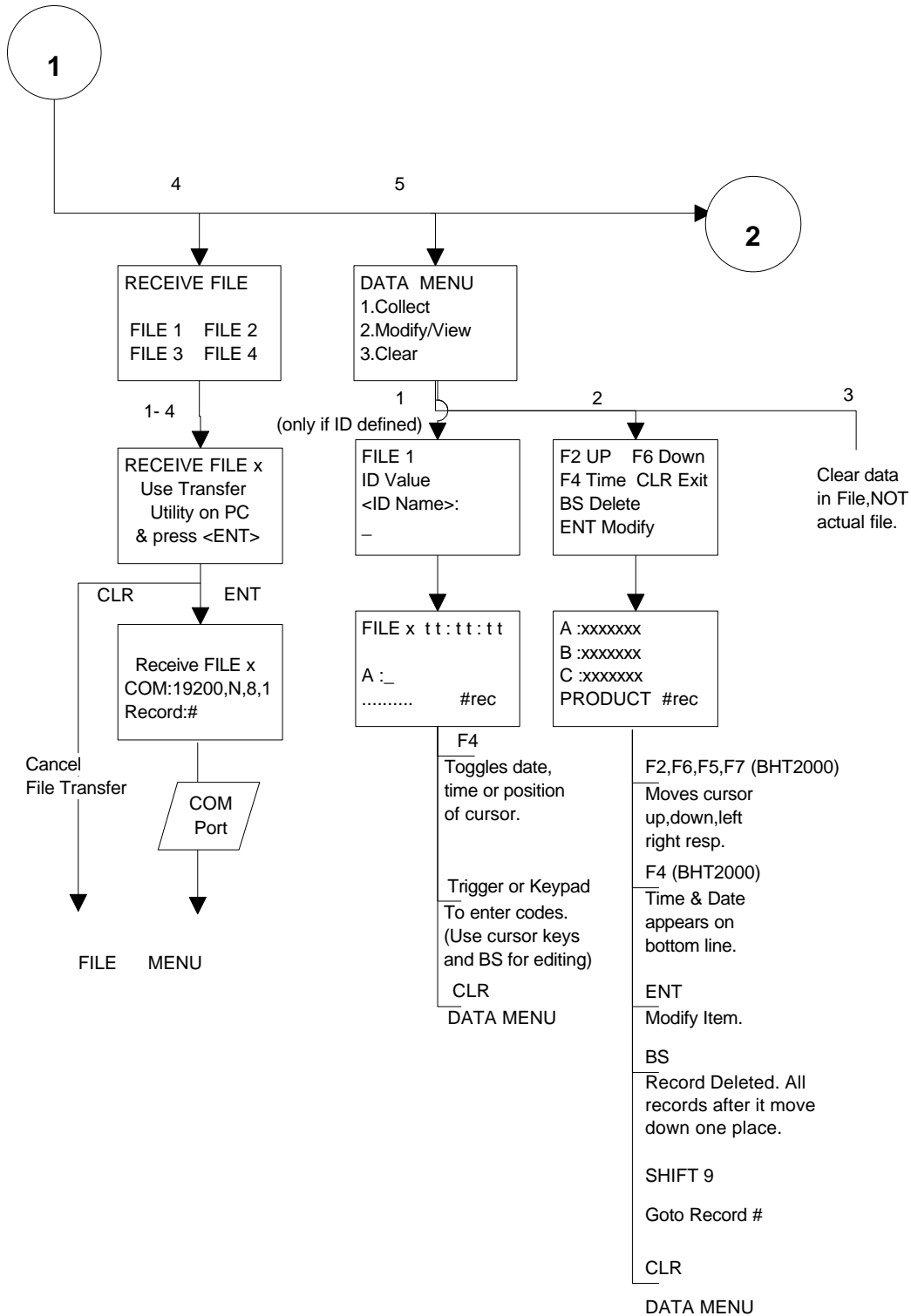


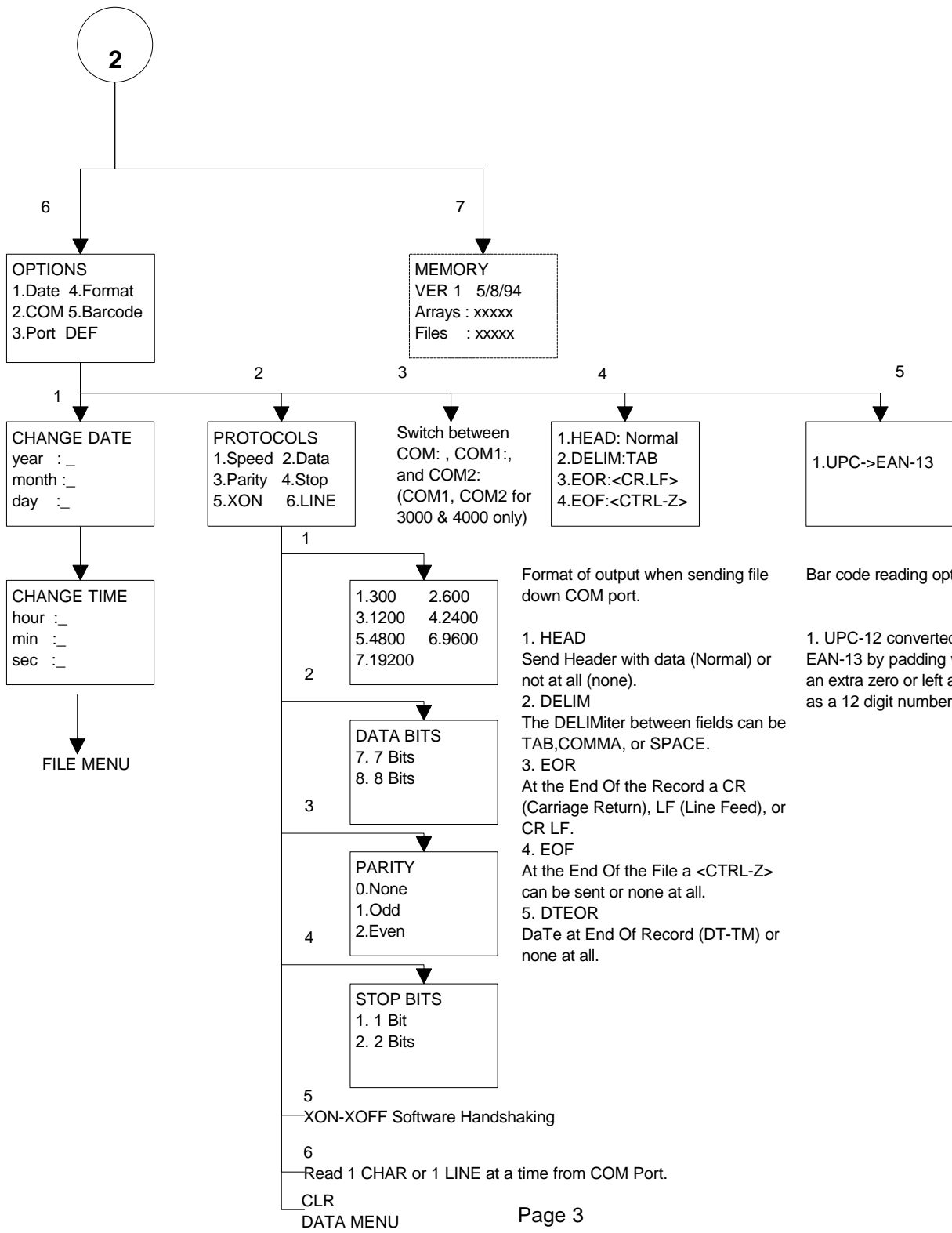
Unique Micro Design

UMD S150 BHT COLLECT

Flowchart of operation

VERSION 6.0





Format of output when sending file down COM port.

1. HEAD
Send Header with data (Normal) or not at all (none).
2. DELIM
The DELIMiter between fields can be TAB,COMMA, or SPACE.
3. EOR
At the End Of the Record a CR (Carriage Return), LF (Line Feed), or CR LF.
4. EOF
At the End Of the File a <CTRL-Z> can be sent or none at all.
5. DTEOR
DaTe at End Of Record (DT-TM) or none at all.

Bar code reading options

1. UPC-12 converted to EAN-13 by padding with an extra zero or left alone as a 12 digit number.