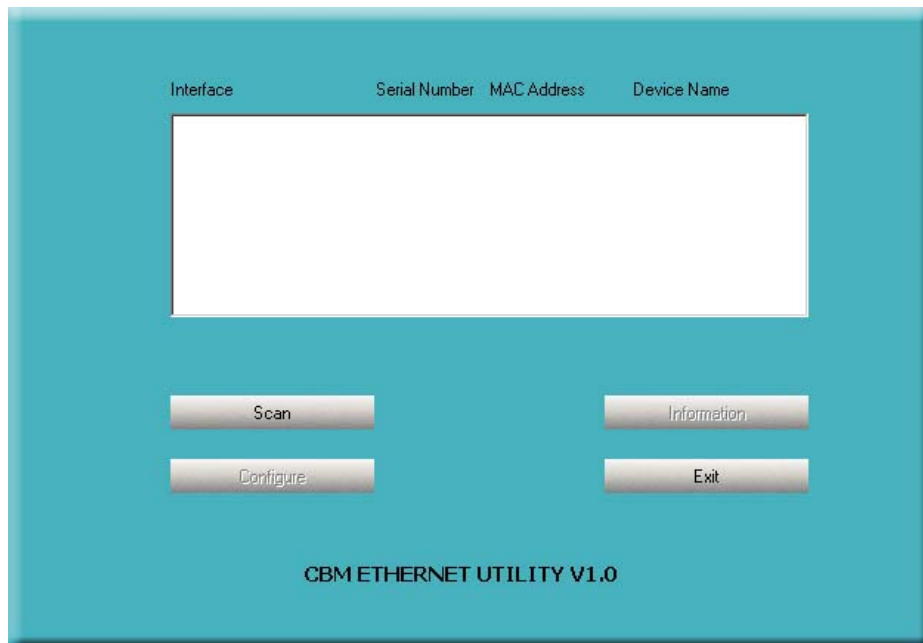


# CBM ETHERNET UTILITY

## USER'S GUIDE



Revision A

06 October 2005

i. Revision History

<i><b>Revision</b></i>	<i><b>Notes</b></i>	<i><b>Author</b></i>	<i><b>Date</b></i>
A	Initial revision	Scott	2005/10/04

## **ii. Related Documents**

*CBM Ethernet Module Product Overview* (CBM America)

*CBM Ethernet Module Programmer's Guide* (CBM America)

*CBM Ethernet Module Hardware Specification* (CBM America)

**Contents**

i. Revision History.....2

ii. Related Documents.....3

I. Introduction.....5

II. Usage.....5

III. Troubleshooting.....8

## I. Introduction

The CBM Ethernet Utility is designed to discover and configure CBM Ethernet Modules on a network. Since the CBM Ethernet Utility uses UDP broadcasts, it can only discover and configure CBM Ethernet Modules on the same physical network as the host PC running the utility. It will not work across networks (routers). The CBM Ethernet Utility will, however, discover modules on different subnets.

## II. Usage

Figure 1 shows what the CBM Ethernet Utility looks like when it is first run. The only options available are “Scan” and “Exit.” Click “Scan” to scan the network for CBM Ethernet Modules.



*Figure 1: Initial Screen*

If CBM Ethernet Modules are discovered, basic information about them will be displayed on the screen. At this time, the “Configure” and “Information” options become available (Figure 2). Clicking “Information” will bring up a static screen that displays the selected CBM Ethernet Module's settings (Figure 3). Clicking “Configure” will bring up a screen that allows the user to change the CBM Ethernet Module's settings (Figure 4).

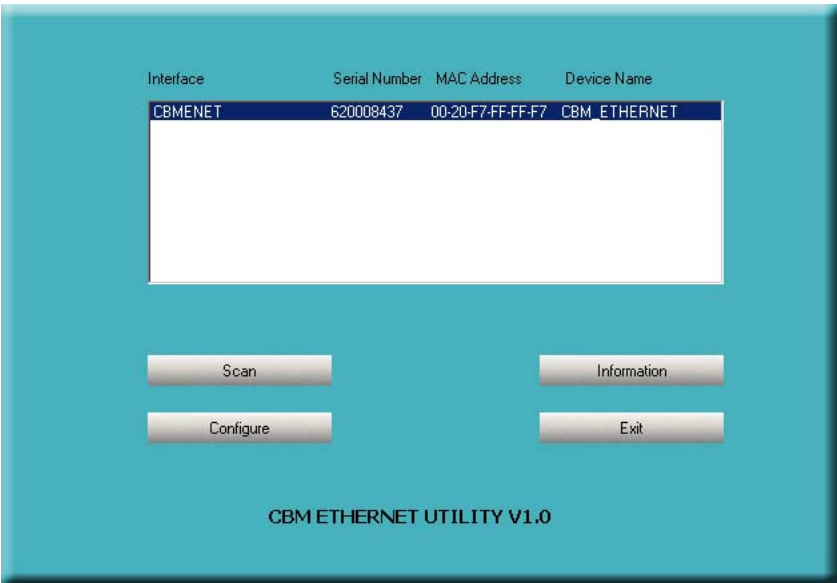


Figure 2: Module Has Been Discovered

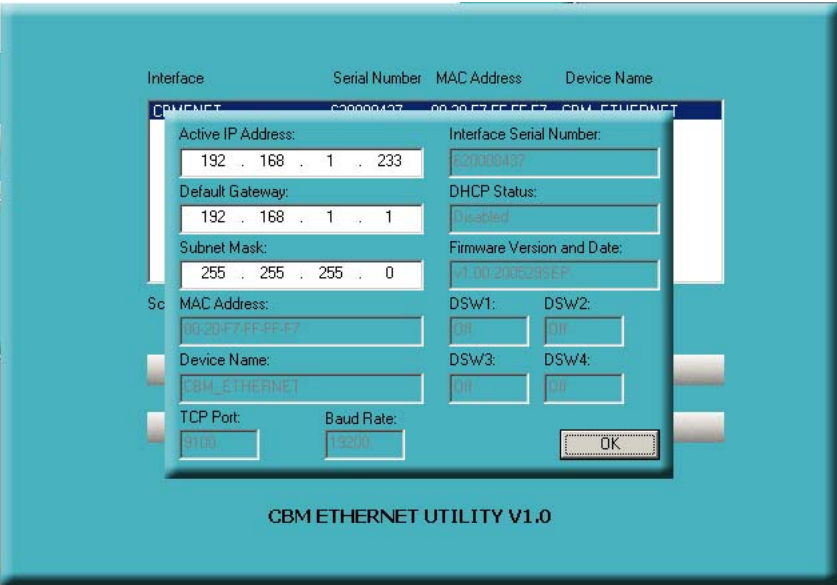
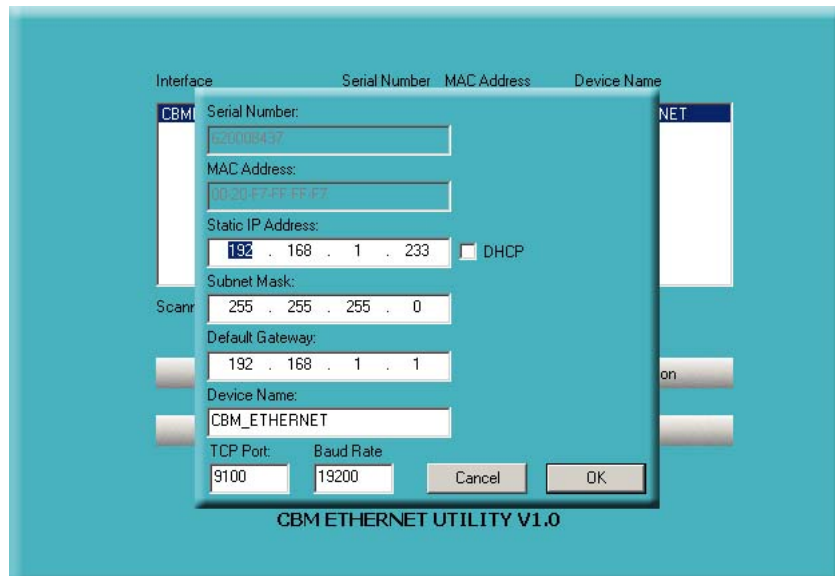


Figure 3: The "Information" Screen



*Figure 4: The "Configure" Screen*

The "Active IP Address" listed on the information screen is the IP address currently being used by the CBM Ethernet Module. If DHCP is enabled, the "Active IP Address" is the IP address assigned by the DHCP server. If DHCP is disabled, the "Active IP Address" is the CBM Ethernet Module's assigned static IP address.

From the configuration screen the CBM Ethernet Module's serial number and MAC address are not editable (since those are fixed at the factory), but all other settings can be changed from this screen.

If DHCP is selected, the values of "Static IP Address," "Subnet Mask," and "Default Gateway" are still stored in the CBM Ethernet Module. When DHCP is disabled, these stored values will be used.

The "Device Name" is not a NETBIOS name, but just a label so that a user can keep track of the CBM Ethernet Modules by name instead of by serial number or MAC address.

The "TCP Port" is the TCP port on which the CBM Ethernet Module will listen for incoming connections that will have print data.

The "Baud Rate" is the baud rate of the serial interface to the printer. This should match the printer's baud rate setting.

### III. Troubleshooting

#### **When I click “Scan” I get a message saying “No Devices Found”**

Are there CBM printers with installed CBM Ethernet Modules powered on and connected to the network? Check the green status LED on the CBM Ethernet Module. If it's not blinking 3 times per second, the module is either faulty or installed incorrectly. Check the red status LED on the CBM Ethernet Module. If it's not on (or not blinking) there's most likely a cabling problem.

Are the CBM Ethernet Modules on the same physical network? If they're on an other network (separated by a router), they cannot be seen by the CBM Ethernet Utility.

Have you set up your firewall to allow the CBM Ethernet Utility access to the network? If your firewall requires more specific settings, allow the CBM Ethernet Utility access to ports 10002 – 10004 (UDP).